

JA Group Organization and Businesses

Local-level JAs (combined JAs) are organizations that conduct business activities through the participation and collective efforts of their members. They collectively purchase the materials necessary for agricultural production and market agricultural products under the provisions of the Agricultural Cooperative Association Act. They are also involved in a wide range of business activities including those that provide members with products necessary for daily life; savings accounts and credit services such as loans; and mutual insurance services that offer life, property, and car insurance.

Prefectural-level federations and central unions as well as the national-level federation ensure that the business activities of local-level JAs are conducted efficiently. The entire JA organization is known as the JA Group. It consists of three levels: local-level JAs; prefectural-level JA federations and CHUOKAI (Prefectural Central Union of Agricultural Cooperatives) organizations; and the national-level JA federation.

In ZEN-NOH's marketing and supply businesses, the unification of prefectural-level JA federations and ZEN-NOH continues to advance as part of the reorganization of JA federations. Currently, there are 34 ZEN-NOH Prefectural Headquarters and one Prefectural Office around the country.

What is ZEN-NOH's role?

The ZEN-NOH Group is responsible for the marketing and supply business of the JA Group, including sale of agricultural products and supply of materials for use in agricultural production. It cooperates with local-level JAs, who are members of the ZEN-NOH Group, and prefectural federations to create scale advantages in carrying out competitive marketing and supply activities. These activities support increases in members' farm incomes and expansion of their agricultural production capacity. ZEN-NOH's role is to supply food products to consumers across Japan through such activities.

ZEN-NOH Profile

Established

March 30, 1972

Business goal

All member cooperative unions work together to promote ZEN-NOH businesses, thereby increasing the production efficiency of the work of member farmers, improving their economic conditions, and contributing to the raising of their status in society. Our businesses, which provide production materials, daily necessities, and process and market agricultural products, are conducted with this goal in mind.

Offices

Main office: Tokyo

Prefectural and municipal headquarters:

Aomori, Iwate, Miyagi, Akita, Yamagata, Fukushima, Ibaraki, Tochigi, Gunma, Saitama, Chiba, Tokyo, Kanagawa, Yamanashi, Nagano, Niigata, Toyama, Ishikawa, Gifu, Mie, Shiga, Kyoto, Osaka, Hyogo, Tottori, Okayama, Hiroshima, Yamaguchi, Tokushima, Ehime, Kochi, Fukuoka, Nagasaki, Oita

Membership

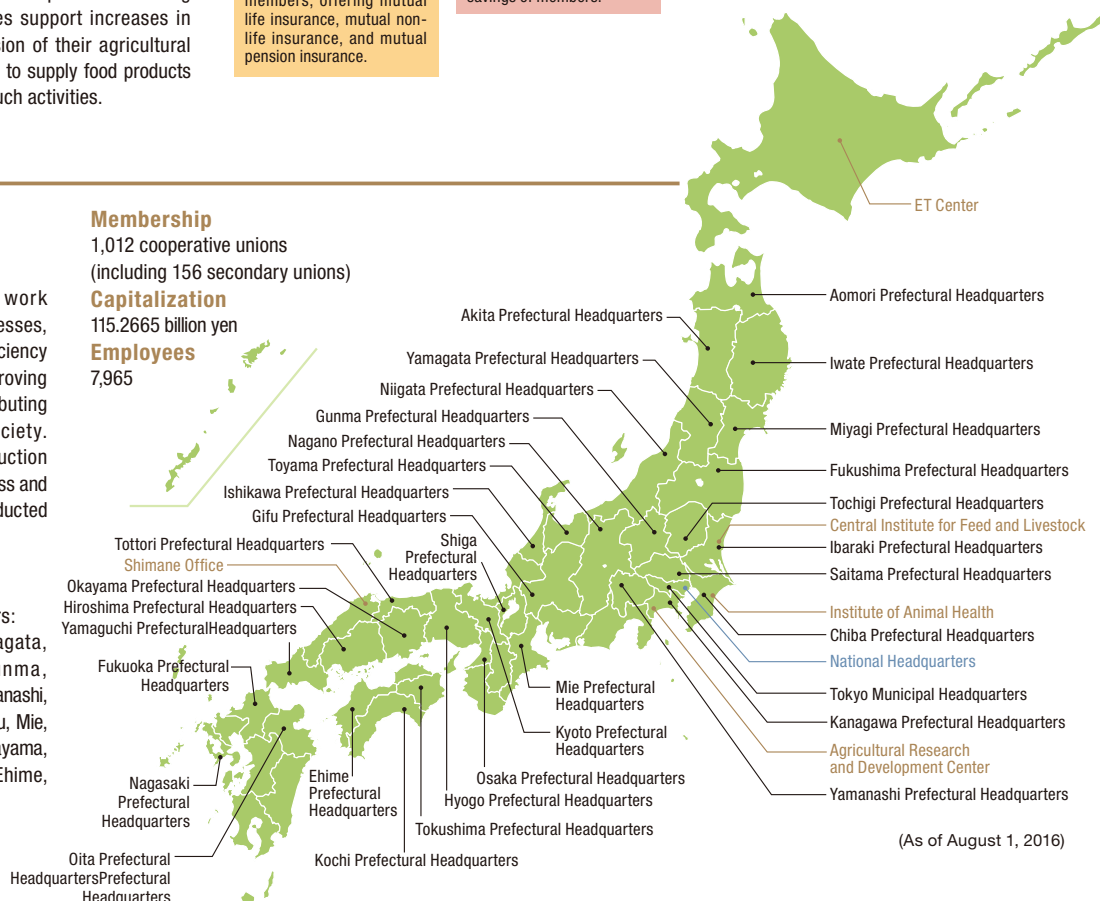
1,012 cooperative unions (including 156 secondary unions)

Capitalization

115.2665 billion yen

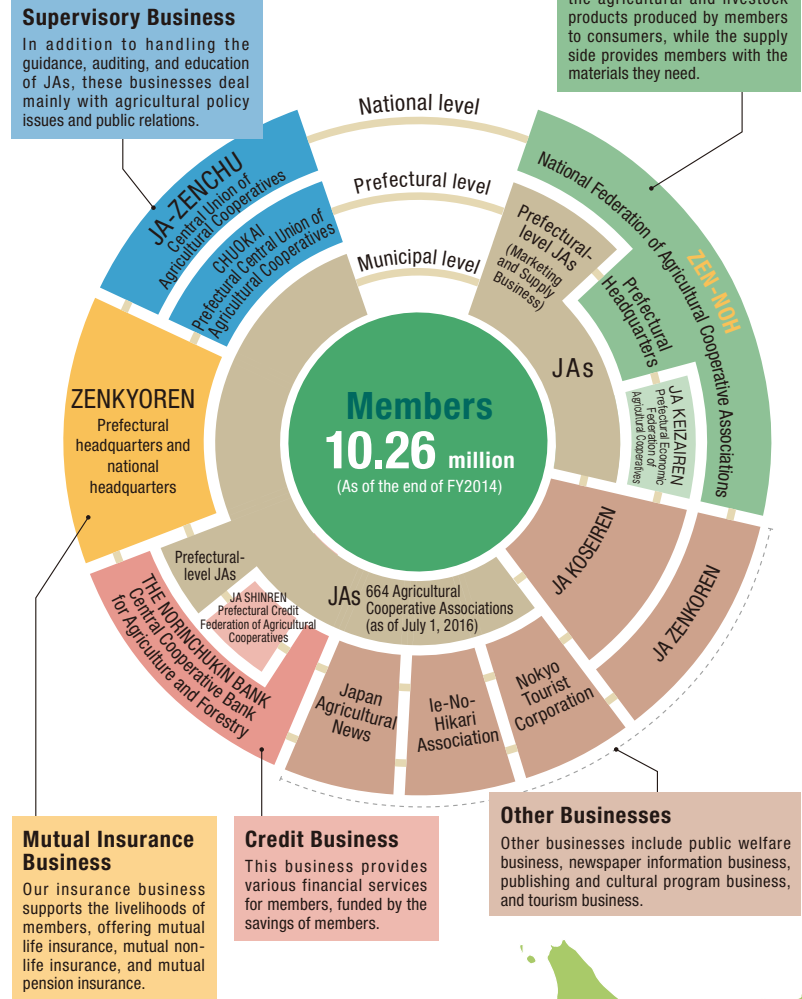
Employees

7,965



(As of August 1, 2016)

Structure of the JA Group



Supervisory Business

In addition to handling the guidance, auditing, and education of JAs, these businesses deal mainly with agricultural policy issues and public relations.

Marketing and Supply Business

The marketing side delivers the agricultural and livestock products produced by members to consumers, while the supply side provides members with the materials they need.

Mutual Insurance Business

Our insurance business supports the livelihoods of members, offering mutual life insurance, mutual non-life insurance, and mutual pension insurance.

Credit Business

This business provides various financial services for members, funded by the savings of members.

Other Businesses

Other businesses include public welfare business, newspaper information business, publishing and cultural program business, and tourism business.